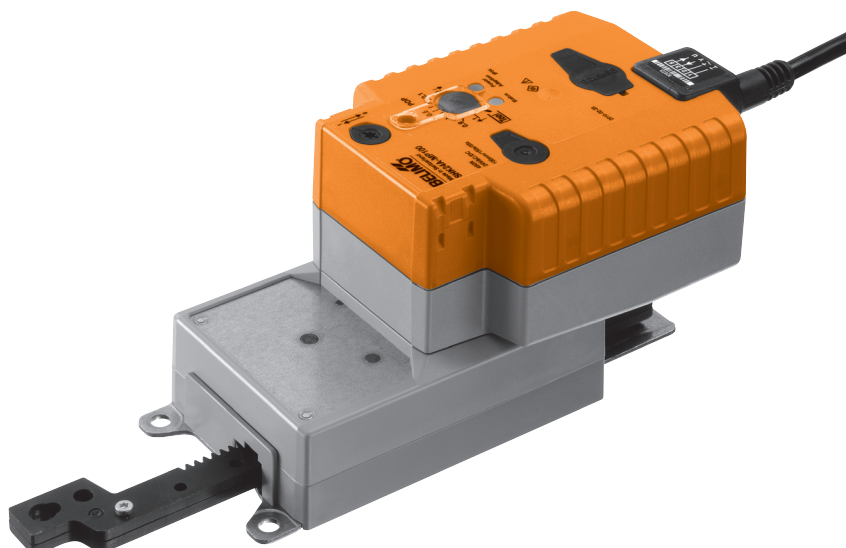


Linear actuator with capacitor technology for adjusting air dampers and sliders with emergency control function and extended functionalities in ventilation and air-conditioning systems for building services installations and in laboratories

- For air dampers up to approx. 3 m²
- Actuating force 450 N
- Nominal voltage AC/DC 24V
- Control: Open-close
- Height of stroke up to max. 100 mm, adjustable in 20 mm increments
- Design life SuperCaps 15 years



Technical data

Electrical data	Nominal voltage	AC 24 V, 50/60 Hz / DC 24 V
	Nominal voltage range	AC 19.2 ... 28.8 V / DC 21.6 ... 28.8 V
	Power consumption	In operation 11 W @ nominal torque At rest <3 W For wire sizing ≤21 VA
	Connection	Cable 1 m, 3 x 0.75 mm ²
	Parallel operation	Yes (note the performance data)
Functional data	Actuating force	≥450 N
	Inhibiting force	≥450 N
	Setting emergency position (POP)	0...100%, adjustable (POP rotary button) of the maximum height of stroke
	Bridging time with voltage interruption	2 s
	Position accuracy	±5%
	Direction of stroke	Motor Reversible with switch 0 / 1 Emergency setting position Reversible with switch 0 ... 100% At switch position 0± or 1±, respectively
	Manual override	Gearing latch disengaged with push button
	Stroke adjustment	max. 100 mm, adjustable in 20 mm increments, can be limited at both ends with mechanical end stops
	Running time	Motor 150 s / 100 mm Emergency setting position 35 s @ 0 ... 50°C
	Sound power level	Motor ≤53 dB (A) @ 90 s running time ≤52 dB (A) @ 150 s running time Emergency setting position ≤61 dB (A)
	Safety	Protection class
Degree of protection		IP54 NEMA 2, UL Enclosure Type 2
EMC		CE according to 2004/108/EC
Certification		Certified to IEC/EN 60730-1 and IEC/EN 60730-2-14 cULus according to UL 60730-1A and UL 60730-2-14 and CAN/CSA E60730-1:02
Mode of operation		Type 1.AA
Rated impulse voltage		0.8 kV
Control pollution degree		3
Ambient temperature		-30 ... +50°C
Non-operating temperature		-40 ... +80°C
Ambient humidity		95% r.h., non-condensating
Maintenance		Maintenance-free

Terms and abbreviations CPO = Controlled power off / controlled emergency control function
POP = Power off position / emergency setting position
PF = Power fail delay time / bridging time

Technical data

(continued)

Dimensions / Weight

Dimensions
Weight

See «Dimensions» on page 5
Approx. 1.6 kg

Safety notes



- The actuator is not allowed to be used outside the specified field of application, especially in aircraft or in any other airborne means of transport.
- It may only be installed by suitably trained personnel. Any legal regulations or regulations issued by authorities must be observed during installation.
- The device may only be opened at the manufacturer's site. It does not contain any parts that can be replaced or repaired by the user.
- The cable must not be removed from the device.
- The rotary supports and coupling pieces available as accessories must always be used if lateral forces are likely. In addition, the actuator must not be tightly bolted to the application. It must remain movable via the rotary support (refer to «Assembly notes»).
- If a rotary support and/or coupling piece is used, then actuating force losses are to be expected.
- If the linear actuator is exposed to severely contaminated ambient air, appropriate precautions must be taken on the system side. Excessive deposits of dust, soot etc. can prevent the gear rod from being extended and retracted correctly.
- If not installed horizontally, the gear disengagement push button may only be actuated when there is no pressure on the gear rod.
- To calculate the actuating force required for air dampers and sliders, the specifications supplied by the damper manufacturers concerning the surface, cross-section, design, installation site and the air flow conditions must be observed.
- The device contains electrical and electronic components and is not allowed to be disposed of as household refuse. All locally valid regulations and requirements must be observed.

Product features

Mode of operation

The actuator moves the air damper to the desired operating position (open-closed) at the same time as the integrated capacitors are loaded. Interrupting the supply voltage causes the air damper to be set to the selected emergency setting position (POP) by means of stored electrical energy.

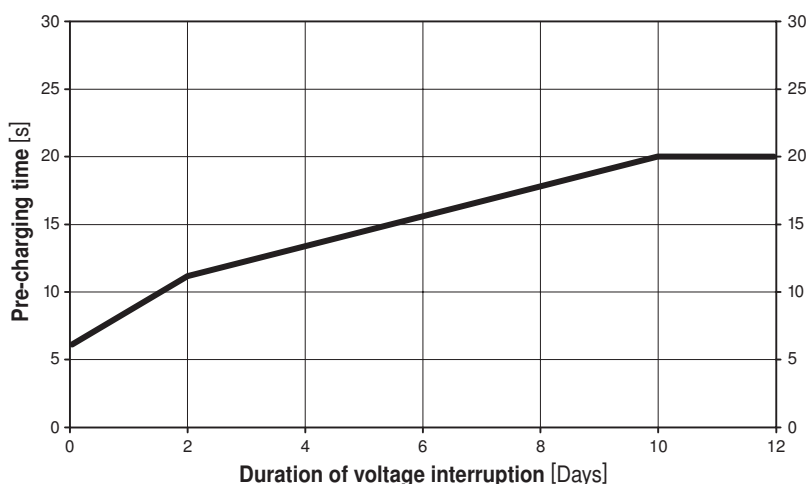
Pre-charging time (start up)

The capacitor actuators require a pre-charging time. This time is used for charging the capacitors up to a usable voltage level. This ensures that, in the event of a voltage interruption, the actuator can be moved at any time from its current position into the preset emergency setting position (POP).

The duration of the pre-charging time depends mainly on how long the power was interrupted.




Typical pre-charging times

	Duration of voltage interruption [Days]				
	0	1	2	7	≥10
Pre-charging time [s]	6	9	11	16	20



Product features

(continued)

- Delivery condition (capacitors)** The actuator is completely discharged after delivery from the factory, which is why the actuator requires approximately 20 s pre-charging time before initial commissioning in order to bring the capacitors up to the required voltage level.
- Simple direct mounting** The actuator can be directly connected with the application using the enclosed screws. The head of the gear rod is connected to the moving part of the ventilation application individually on the mounting side or with the Z-KS1 coupling piece provided.
- Manual override** Manual override with push button possible (the gear is disengaged for as long as the button remains pressed down).
- High functional reliability** The actuator is overload-proof, requires no limit switches and automatically stops when the end stop is reached.
- Home position / Start** After the supply voltage has been switched on, the actuator moves into the selected position.
- | Pos. direction of stroke | Home position |
|---|--|
|  | 0 extended  |
| | 1 retracted  |
- Direction of stroke switch** When actuated, the direction of stroke switch changes the running direction in normal operation. The direction of stroke switch has no influence on the emergency setting position (POP) which has been set.
- Emergency setting position (POP) rotary button** The «Emergency setting position» rotary button can be used to adjust the desired emergency setting position (POP). The POP range is in reference to the maximum height of stroke of the actuator.
In the event of a voltage interruption, the actuator will move into the selected emergency setting position, taking into account the bridging time (PF) of 2 s which was set ex-works.
- Adjustable stroke** The stroke range can be adjusted on both sides in increments of 20 mm by means of mechanical end stops.


Accessories

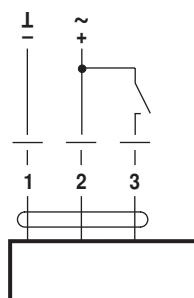
	Description	Data sheet
Mechanical accessories	Rotary support to compensate lateral forces Z-DS1	T2 - Z-SH..A..
	Coupling piece Z-KS1	T2 - Z-SH..A..
	End stop set Z-AS1	T2 - Z-SH..A..

Electrical installation

Wiring diagram

Notes

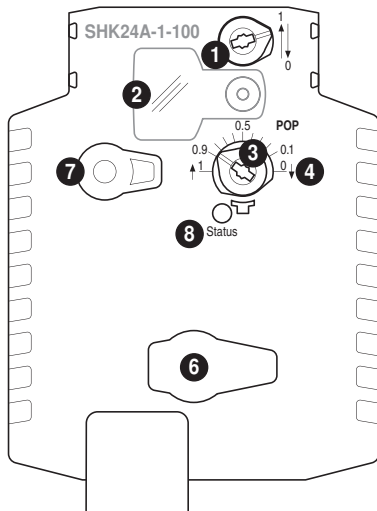
- Connection via safety isolation transformer. 
- Parallel connection of other actuators possible. Note the performance data.



Cable colours:

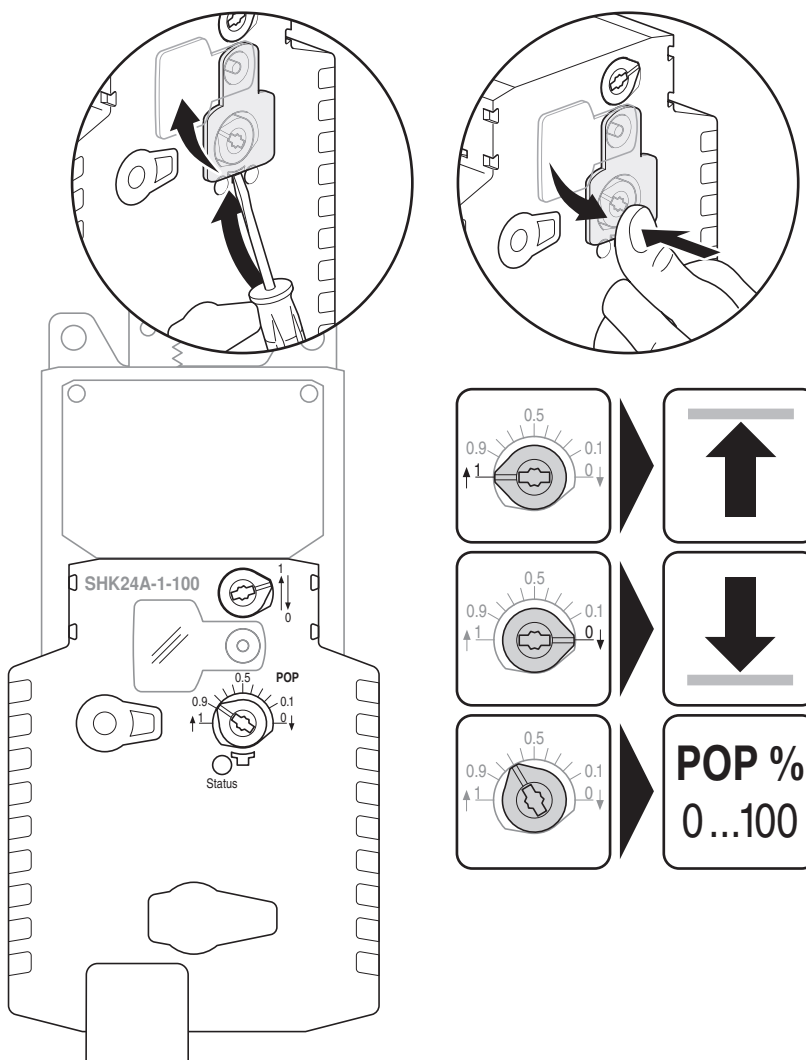
- 1 = black
- 2 = red
- 3 = white

Operating controls and Indicators



- 1 Direction of stroke switch
- 2 Cover, POP button
- 3 POP button
- 4 Scale for manual adjustment
- 6 (no function)
- 7 Disengagement button
- 8 LED display yellow
Off: No voltage or fault
Illuminated: Operation

Setting the POP Power Off position



Assembly notes

Application without lateral forces The linear actuator is screwed directly to the housing at three points. Afterwards, the head of the gear rod is fastened to the moving part of the ventilation application (e.g. damper or slider).

Application with lateral forces The coupling piece with the internal thread (Z-KS1) is connected to the head of the gear rod. The rotary support (Z-DS1) is screwed to the ventilation application. The linear actuator is subsequently screwed to the previously mounted rotary support with the enclosed screw. Afterwards, the coupling piece, which is mounted to the head of the gear rod, is attached to the moving part of the ventilation application (e.g. damper or slider). The lateral forces can be compensated for to a certain limit with the rotary support and/or coupling piece. The maximum permissible swivel angle of the rotary support and coupling piece is 10° , laterally and upwards.

Caution

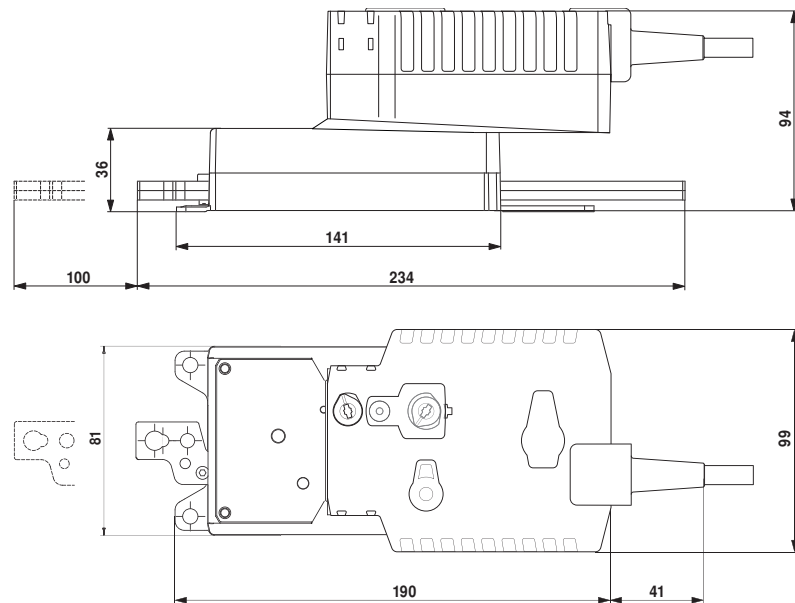
If a rotary support and/or coupling piece is used, losses in the actuation force losses are to be expected.

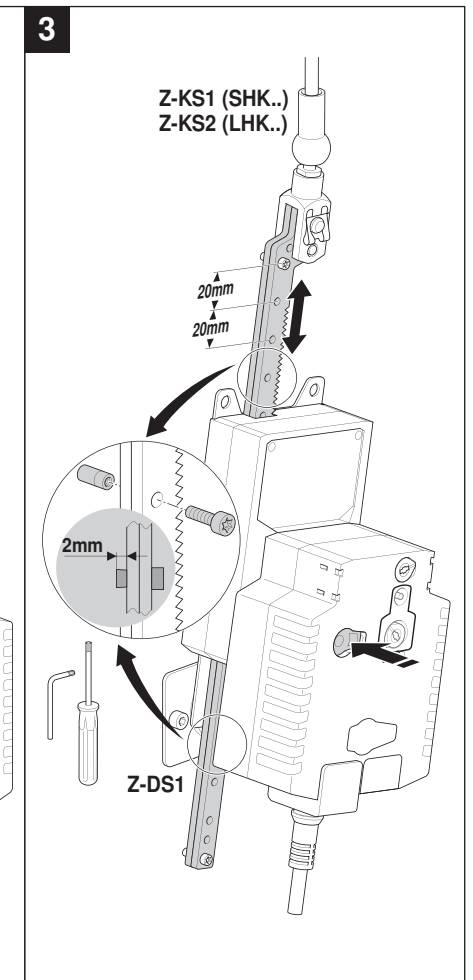
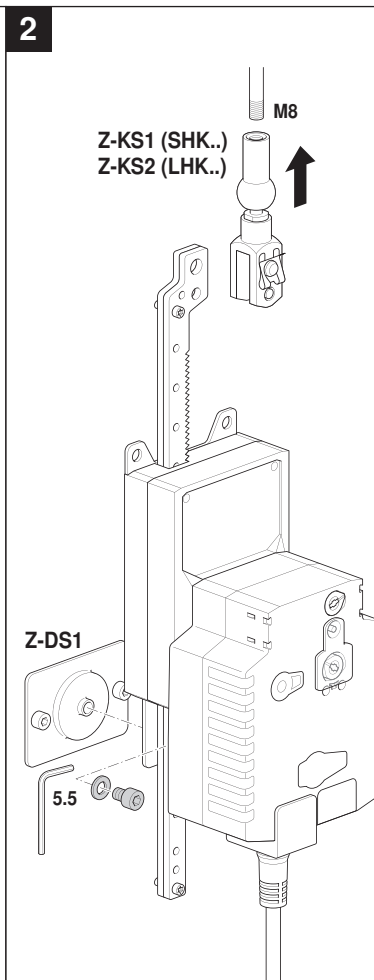
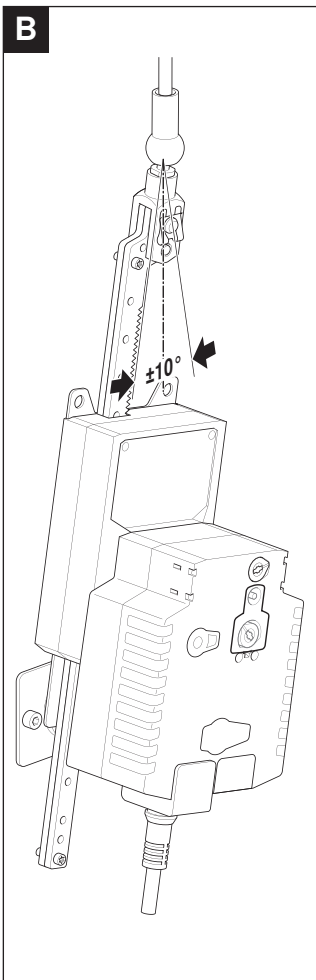
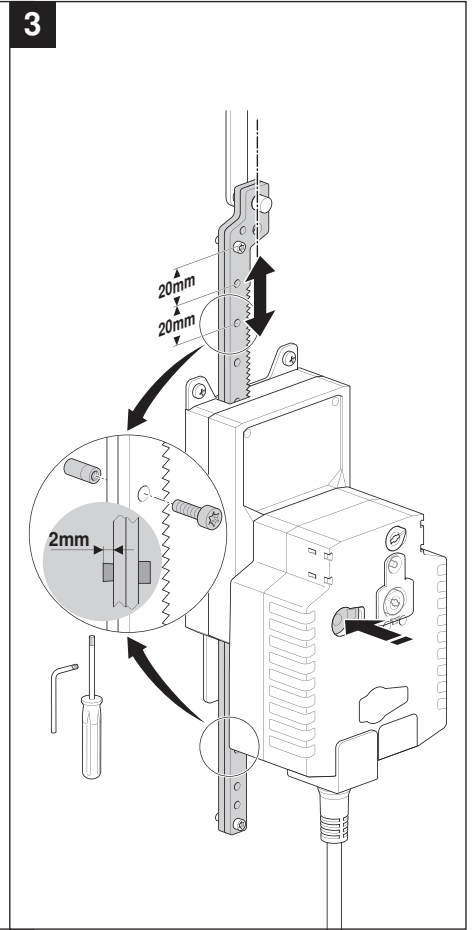
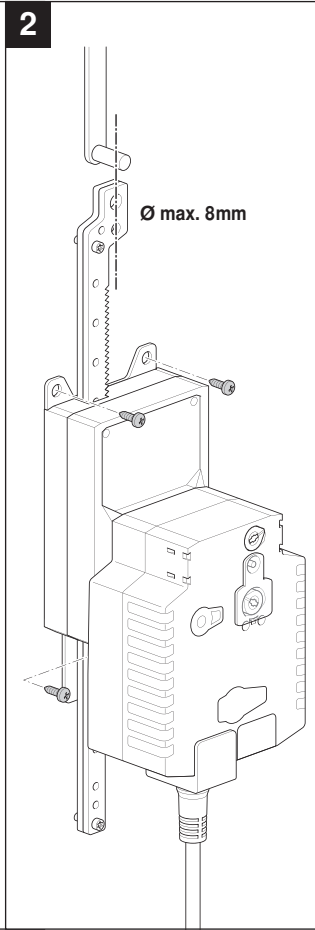
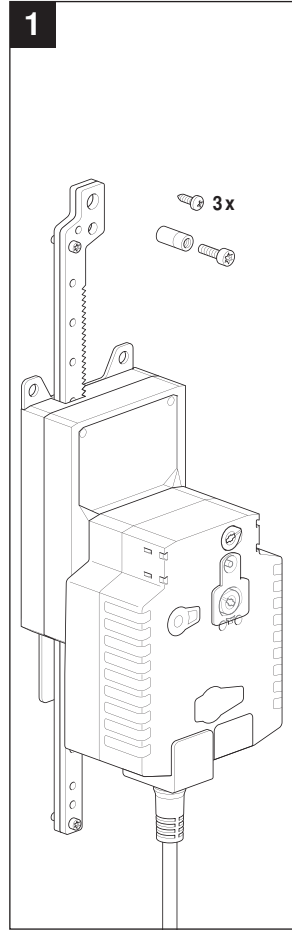
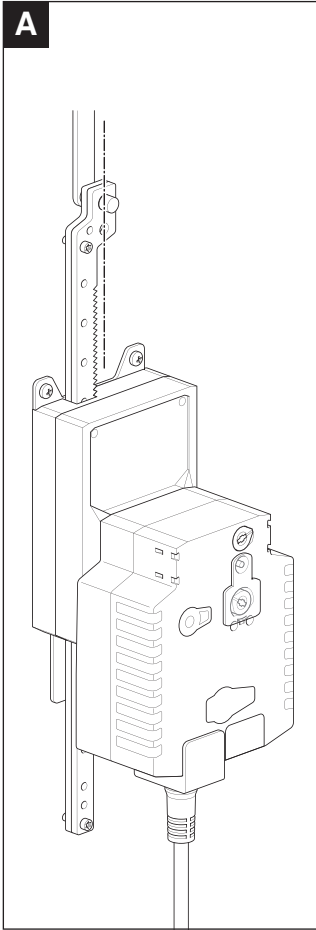


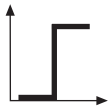
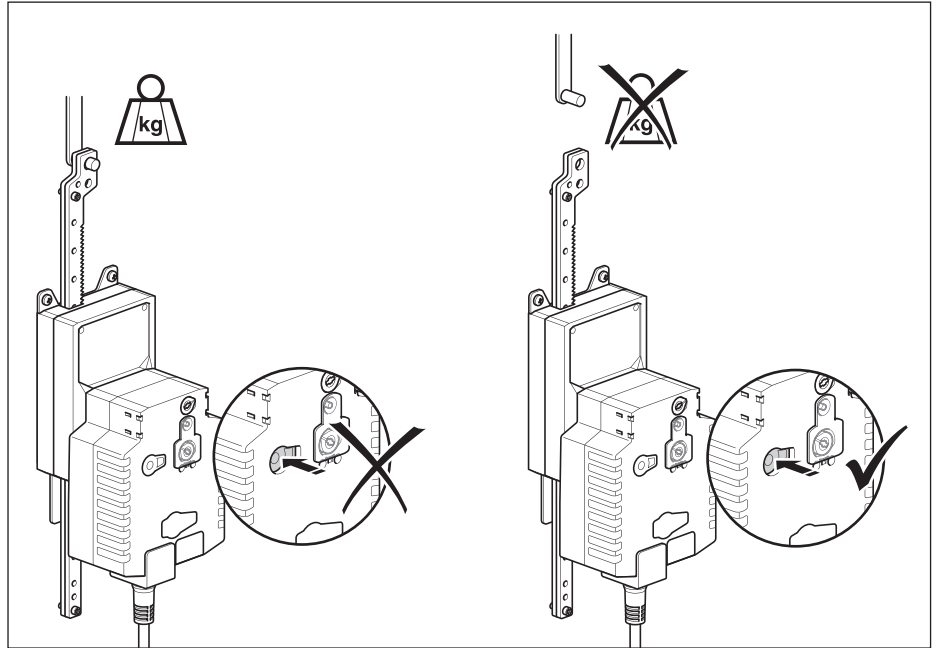
Stroke limitation If the stroke limitations are used on the gear rod, the mechanical working range can be exploited, starting with an extension length of 20 mm.

Dimensions [mm]

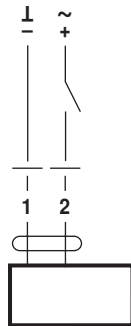
Dimensional drawings



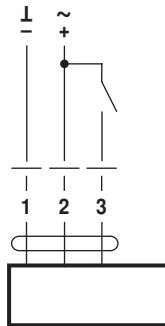




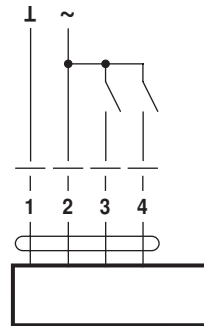
AC 24 V / DC 24 V



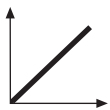
LHK24AX
SHK24AX



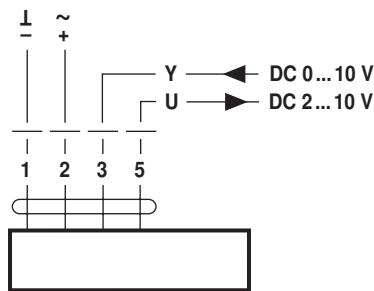
LHK24A-1
SHK24A-1



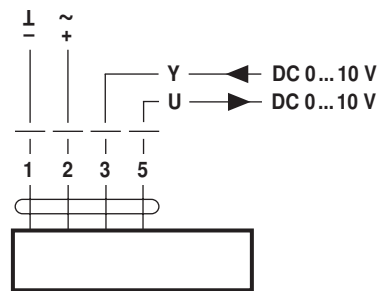
LHK24AX-3
SHK24AX-3



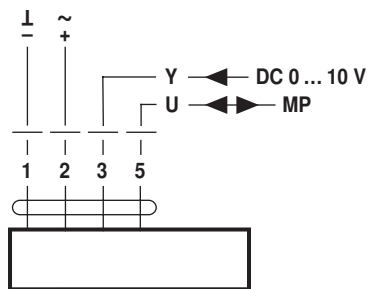
AC 24 V / DC 24 V



LHK24A-SR
SHK24A-SR



LHK24A-SZ SHK24A-SZ
LHK24A-MF SHK24A-MF



LHK24A-MP
SHK24A-MP