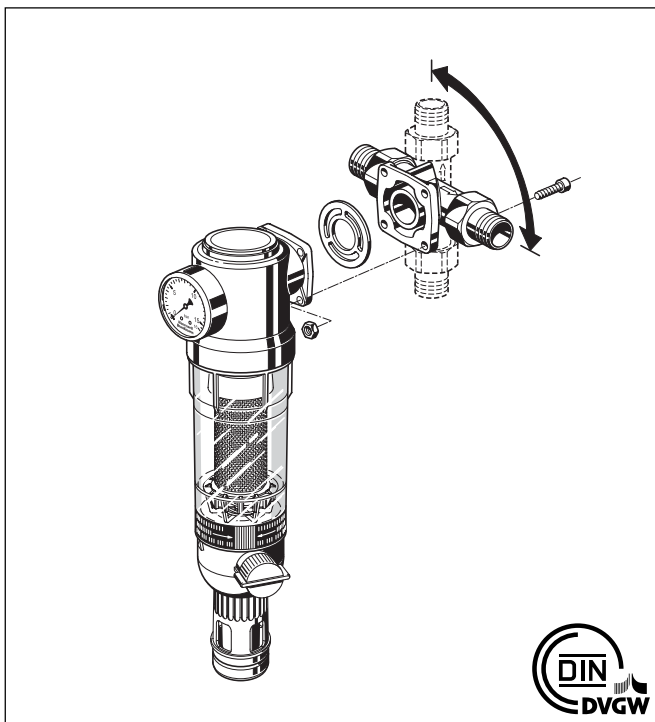


# F76CS

## Reverse rinsing fine filter with rotatable connector flange

### Product specification sheet



#### Construction

The fine filter comprises:

- Housing with pressure gauge
- Fine filter in clear filter bowl
- Rotatable connector flange
- Drain connection and ball valve
- Double ring wrench for filter bowl

#### Materials

- Housing of dezincification resistant brass
- Stainless steel fine filter
- Red-bronze or shock-resistant clear synthetic material filter bowl
- Brass rotatable connector flange
- Fibre-reinforced NBR diaphragm
- NBR seals

#### Application

F76CS reverse rinsing filters ensure a continuous supply of filtered water. The fine filter prevents the ingress of foreign bodies, for example rust particles, strands of hemp and grains of sand. The appliances correspond to the requirements of current DIN/DVGW specifications.

F76CS fine filters are especially suitable for retrofitting to, or upgrading of existing water systems. The rotatable connector piece enables the unit to be fitted where space is very restricted in either horizontal or vertical pipework.

#### Special Features

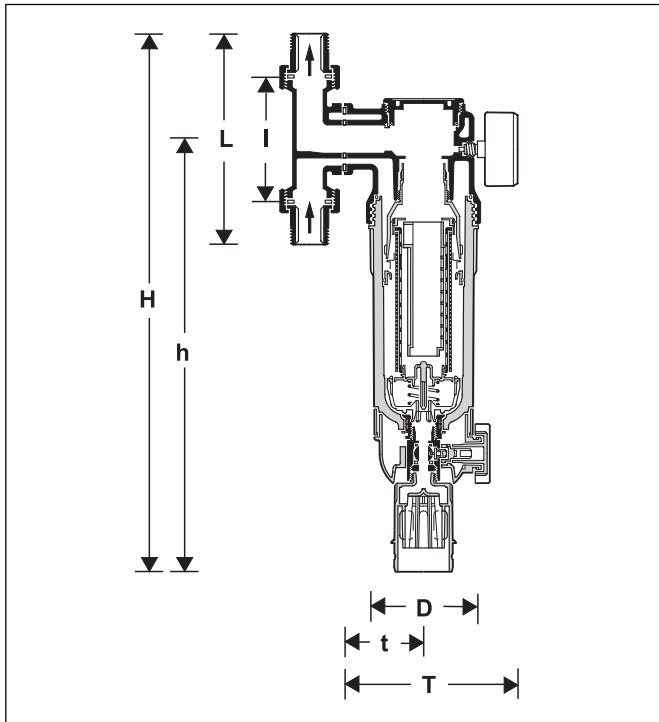
- DIN/DVGW tested
- Filtered water supplied even during reverse rinsing
- Patented reverse rinsing system - fast and thorough cleaning of the filter with small amount of water
- Memory ring indicates when the next manual reverse rinsing is due
- Automatic reverse rinsing actuator can be retrofitted using bayonet connector
- Large filter surface
- Shock resistant clear synthetic material filter bowl enable easy checking of filter contamination
- Filter insert fully interchangeable
- With a retrofit D06FB pressure reducing valve, can be converted to a filter combination
- Very simple operation
- Complies with KTW requirements
- Reliable and tested
- Standardised discharge connection
- Rotatable connector flange enables space saving installation

#### Range of Application

Medium Water

#### Technical Data

Installation position	Horizontal, with filter bowl downwards
Operating temperature	Maximum 40 °C with clear filter bowl
Operating pressure	Minimum 1.5 bar Maximum 16.0 bar
Connection sizes	$\frac{3}{4}$ " - 1 $\frac{1}{4}$ "



**Method of Operation**

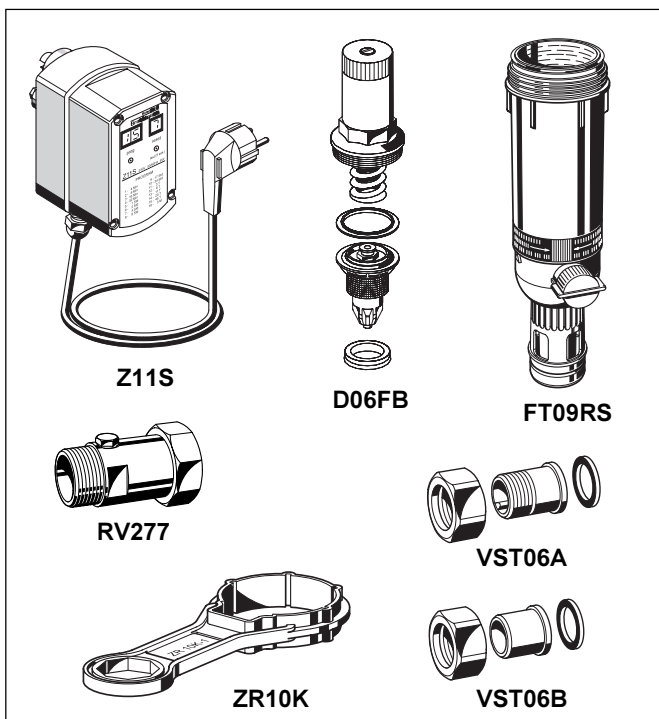
The filter insert is divided into two parts. In the „filtering“ position, only the lower, larger section is rinsed through by water jets from outside to inside. The small upper section does not come in contact with unfiltered water. When the ball valve is opened for reverse rinsing, then the whole filter insert is pushed downwards until the water supply to the outer side of the main filter is stopped. Simultaneously, the water flow is opened to the upper part of the filter. The water needed for cleaning the filter passes through the upper filter section, then the rotating impeller and the main filter from inside to outside, i.e. the filter is reverse rinsed with filtered water. In that way the upper filter is also cleaned by jets from the impeller. The filter automatically switches back to the operating position when the ball valve is closed again.

**Options**

F76CS- ... AA = Lower/upper filter mesh size 100 µm

Connection size

Connection size	R	3/4"	1"	1 1/4"
Nominal size	DN	20	25	32
Approximate weight	(kg)	3.7	3.8	3.9
Dimensions (mm)	L	158	179	197
	l	90	100	105
	H	442	453	462
	T	177	177	181
	t	95	95	99
	h	33	363	363
	D	97	97	97
Flow rate at $\Delta p = 0,2 \text{ bar}$	(m <sup>3</sup> /h)	4.4	4.4	5.0
kvs-value		9.8	9.8	11.2
DIN/DVGW-Approval No.		NW – 9301 AT 2309		



**Accessories**

**Z11S**

**Automatic reverse rinsing actuator**

For automatic reverse rinsing of the filter at pre-settable intervals

**ZR10K**

**Double ring wrench**

For removing filter bowl

**FT09RS**

**Red-bronze filter bowl**

For temperatures up to 70 °C and pressures up to 25.0 bar

**D06FB**

**Retrofit pressure reducing valve**

For retrofitting to upgrade F76CS to a filter combination

**RV277**

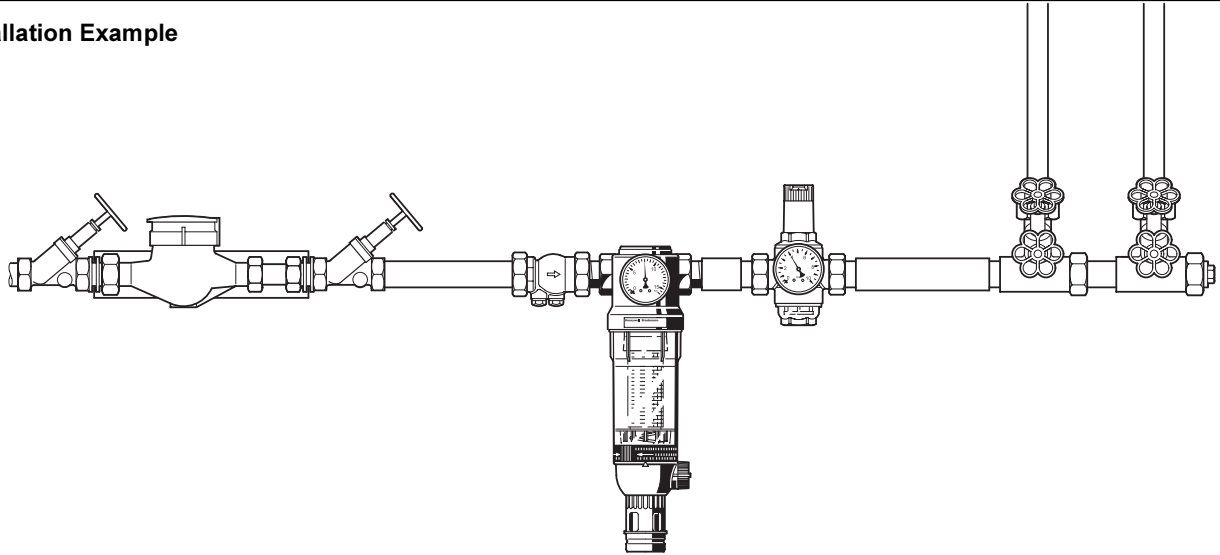
**Connector set**

In sizes R 3/4" -1 1/4"

**VST06**

**Connector set**

With threaded or solder union connector  
 A = Threaded union connector  
 B = Solder union connector

**Installation Example****Installation Guidelines**

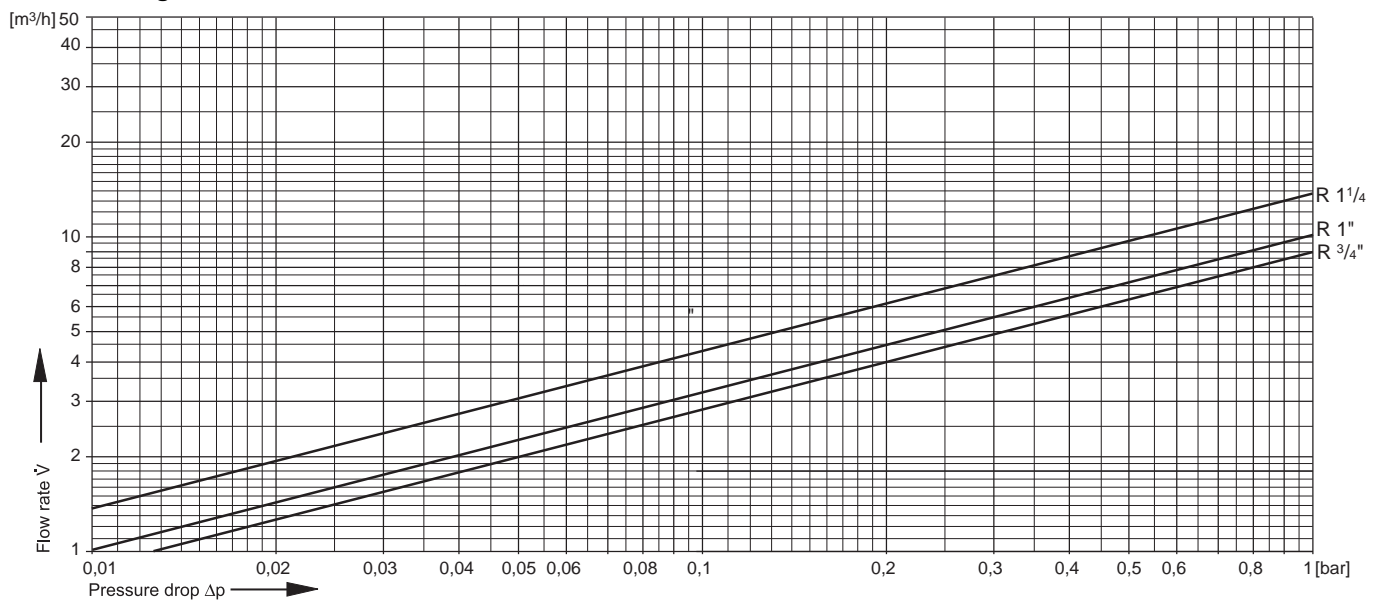
- Install in horizontal or vertical pipework with filter bowl downwards
  - This position ensures optimum efficiency
- Fit shut off valves on both sides of the water meter
  - So that pressure gauge can be easily read
  - Degree of contamination can be seen with clear filter bowl
  - Simplifies maintenance and inspection
- Fit immediately after water meter
  - Corresponds to DIN 1988, Part 2

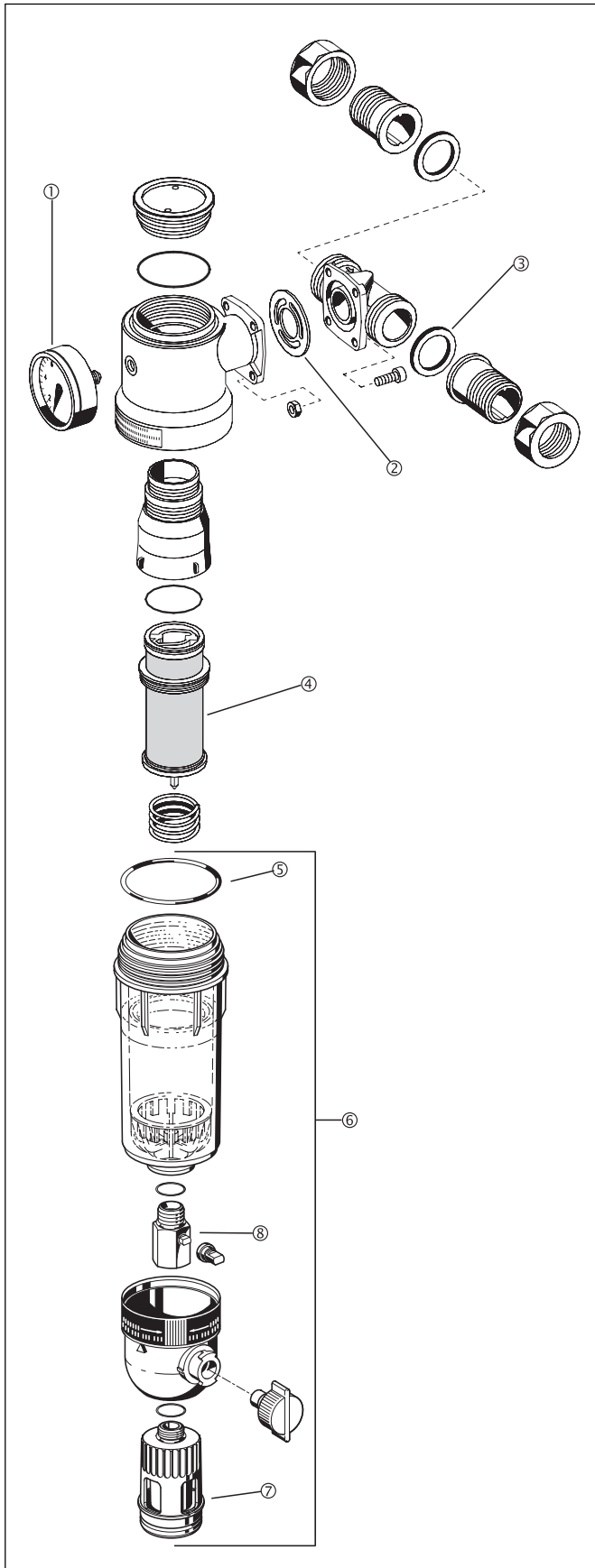
**Typical Applications**

F76CS fine filters are suitable for supplies to buildings of all types. They can be used for industrial or commercial purposes within their specification.

F76CS fine filters are installed:

- Where there is existing metal or plastics pipework
- For installation in horizontal or vertical pipework
- As replacement for an existing filter (e.g. Cillit type 77)
- Where space is limited, particularly with small clearance from the wall
- Where dirt sensitive appliances are fitted in the downstream system

**kvs-value Diagram**



**Spare Parts for Household Fine Filters F76CS  
(From 1997 onwards)**

Description	Nominal size	Part number
① Pressure gauge (0-16 bar)	3/4" - 1 1/4"	M07M-A16
Pressure gauge (0-25 bar)	3/4" - 1 1/4"	M07M-A25
② Flange seal	3/4" - 1 1/4"	5536400
③ Seal ring set (pack of 10)	3/4"	0901444
	1"	0901445
	1 1/4"	0901446
④ Filter insert complete		
Filter mesh 100 µm	3/4" - 1 1/4"	AF11S-1A
Filter mesh 20 µm	3/4" - 1 1/4"	AF11S-1B
Filter mesh 50 µm	3/4" - 1 1/4"	AF11S-1C
Filter mesh 200 µm	3/4" - 1 1/4"	AF11S-1D
Filter mesh 300 µm	3/4" - 1 1/4"	AF11S-1E
Filter mesh 500 µm	3/4" - 1 1/4"	AF11S-1F
⑤ 'O' ring set (pack of 10)	3/4" - 1 1/4"	0900747
⑥ Clear filter bowl	3/4" - 1 1/4"	KF11S-1A
⑦ Drain connection	3/4" - 1 1/4"	AA76-1/2A
⑧ Ball valve complete	3/4" - 1 1/4"	KH11S-1A

**Automation and Control Products**

Honeywell GmbH  
Hardhofweg  
D-74821 Mosbach

Phone: (49) 6261 810  
Fax: (49) 6261 81309  
braukmann@honeywell.com

**Honeywell**  
**Braukmann**

<http://europe.hbc.honeywell.com>