

D-SX100

pressure reducing valve for liquids and gasses up to 130 °C

data sheet

Technical Data

Connection	DN 50 - 100		
Nominal Pressure	Inlet	PN 16	
	Outlet	PN 10	
Inlet Pressure	up to 16 bar		
Outlet Pressure	2 - 5 bar adjustable		
K_{vs} -Value	32 - 100 m ³ /h		
Leak Tightness	acc. VDI/VDE-guideline 2174 (leakage rate K 0,05 % of K_{vs} -value)		

Description

The pressure reducer D-SX100 is a diaphragm-controlled, spring-loaded proportional controller with releas for high flow rates of unperilous media. All parts consist of CrNiMo-steel with smooth surfaces. The valve cone is built as soft seal.

Body and spring module with spring cap, spring, set screw, diaphragm and internal parts are only combined by the profile clamp and 2 screws. To replace the diaphragm ore the complete spring module for an other pressure range is easy and possible without special tools. That applies also for maintenance.

The outlet pressure balances the force of the valve spring across the diaphragm (set value). As the outlet pressure rises above the pressure set using the set screw, the valve cone moves toward the seat causing the flow to be restricted. As the outlet pressure drops the restricting orifice becomes larger. The valve is fully open if the pipeline is depressurised. Rotating the setting screw clockwise increases the outlet pressure..

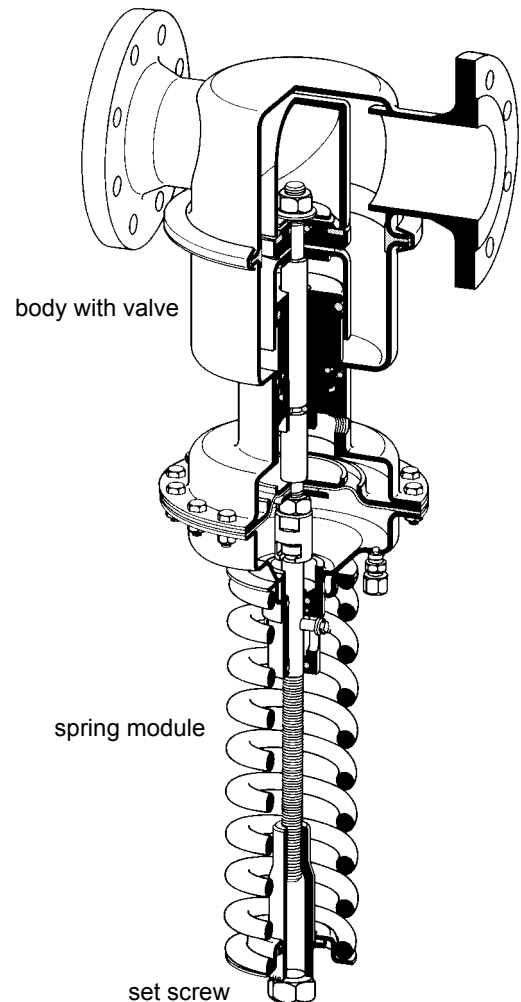
The pressure reducing valves D-SX100 are operated by a sense line (which has to be installed at site).

STANDARD

- completely stainless steel
- quick release fastener
- sense line connection

Options

- manometer connection
- with toxic or hazardous media closed spring cap with leakage line connection (incl. setting spindle seal)
- different materials for diaphragm and seals suitable for your medium
- special connections:
Aseptik-, ANSI- or DIN-flanges, welding ends,
other connections on request
- special designs on request

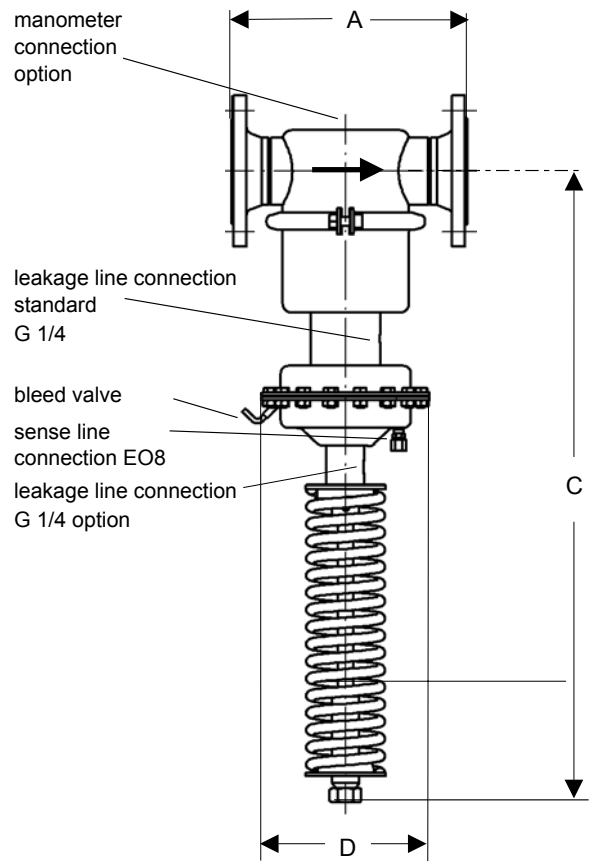


K_{vs} -Values [m ³ /h]			
nominal diameter DN			
50	65	80	100
32	50	80	100

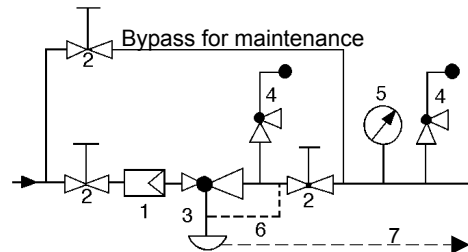
Materials	
Temperature	130 °C
Body, Diaphragm Housing, Internals	CrNiMo-steel
Feder	CrNi-steel
Valve Seal	EPDM optional FPM or PTFE
Diaphragm	EPDM optional FPM
O-ring	EPDM optional FPM

Dimensions [mm]				
size	nominal diameter DN			
	50	65	80	100
A	230	290	310	350
C	740	790	790	790
D	220	220	220	220

Weights [kg]				
nominal diameter DN				
	50	65	80	100
	34	35	37	39



recommended installation



- 1 strainer
- 2 shut-off valves
- 3 pressure reducer
- 4 safety valves
- 5 manometer
- 6 sense line (option)
- 7 leakage line (option)

sense line connection 10 - 20 x nominal diameter behind the valve.