

Duct / flue gas temperature measuring transducers,
including mounting flange, calibrateable, with multi-range switching
and active output

S+S REGELTECHNIK

Calibrateable flue gas measuring transducer THERMASGARD® RGTM 1 with eight switchable measuring ranges, exchangeable spring-mounted measuring insert and straight protective tube, connecting head made of aluminium, metal mounting flange and continuous output for the detection of high temperatures in gaseous media, e.g. for exhaust air or flue gas temperature measurement. These sensors are factory-calibrated. Adjustment/fine adjustment by the user is possible (range and zero point are adjustable).

RGTM1

TECHNICAL DATA:

Power supply: 24V AC/DC $\pm 10\%$ for output 0-10V
15-35V DC for output 4...20mA (depending on working resistance)

Sensor: Pt1000, DIN EN 60751, class B, glass sensing resistor

Measuring ranges: **multi-range switching with 8 switchable measuring ranges,**
see table (other ranges optional)
with manual zero point correction (± 5 K)

Output: 0-10V or 4...20mA

Ambient temperature: measuring transducer -30...+70 °C

Connection type: 2- or 3-wire connection

Process connection: by mounting flange, stainless steel
(included in the scope of delivery)

Protective tube: stainless steel, 1.4571, V4A, $\varnothing = 11$ mm

Nominal length: see table

Connecting head: form B, material aluminium,
colour white aluminium (similar RAL 9006),
M 20 x 1.5

Electrical connection: 0.14 - 1.5 mm² via terminal screws

Humidity: <95% r.H., non-precipitating air

Protection class: III (according to EN 60730)

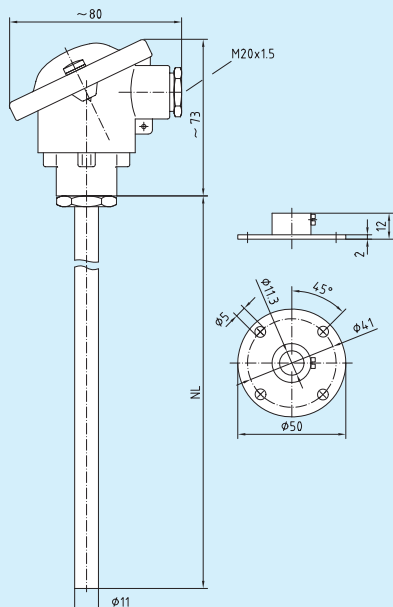
Protection type: IP 54 (according to EN 60529),
IP 65 (optional)

Standards: CE conformity, electromagnetic compatibility
according to EN 61326 + A1 + A2,
EMC directive 2004/108/EC



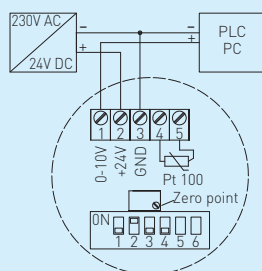
Dimensional drawing

RGTM1



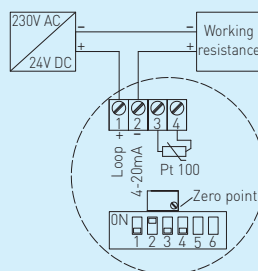
Connecting diagram

RGTM 1-U



Connecting diagram

RGTM 1-I



Measuring ranges (adjustable)	DIP 1	DIP 2	DIP 3	DIP 4
-20 °C ... +150 °C	ON	ON	ON	ON
0 °C ... +50 °C	OFF	ON	ON	ON
0 °C ... +100 °C	ON	OFF	ON	ON
0 °C ... +200 °C	OFF	OFF	ON	ON
0 °C ... +300 °C	ON	ON	OFF	ON
0 °C ... +400 °C	OFF	ON	OFF	ON
0 °C ... +500 °C	ON	OFF	OFF	ON
0 °C ... +600 °C	OFF	OFF	OFF	ON

THERMASGARD® RGTM 1, including mounting flange

Type/WG1	Output	200 mm	250 mm	300 mm	400 mm
RGTM 1-I	4...20mA	•	•	•	•
RGTM 1-U	0-10V	•	•	•	•
Optional: Other measuring ranges on request.					
Please specify in your order: Type and length of protective sleeve e.g. RGTM1-U, 250 mm; RGTM1-I, 300 mm					